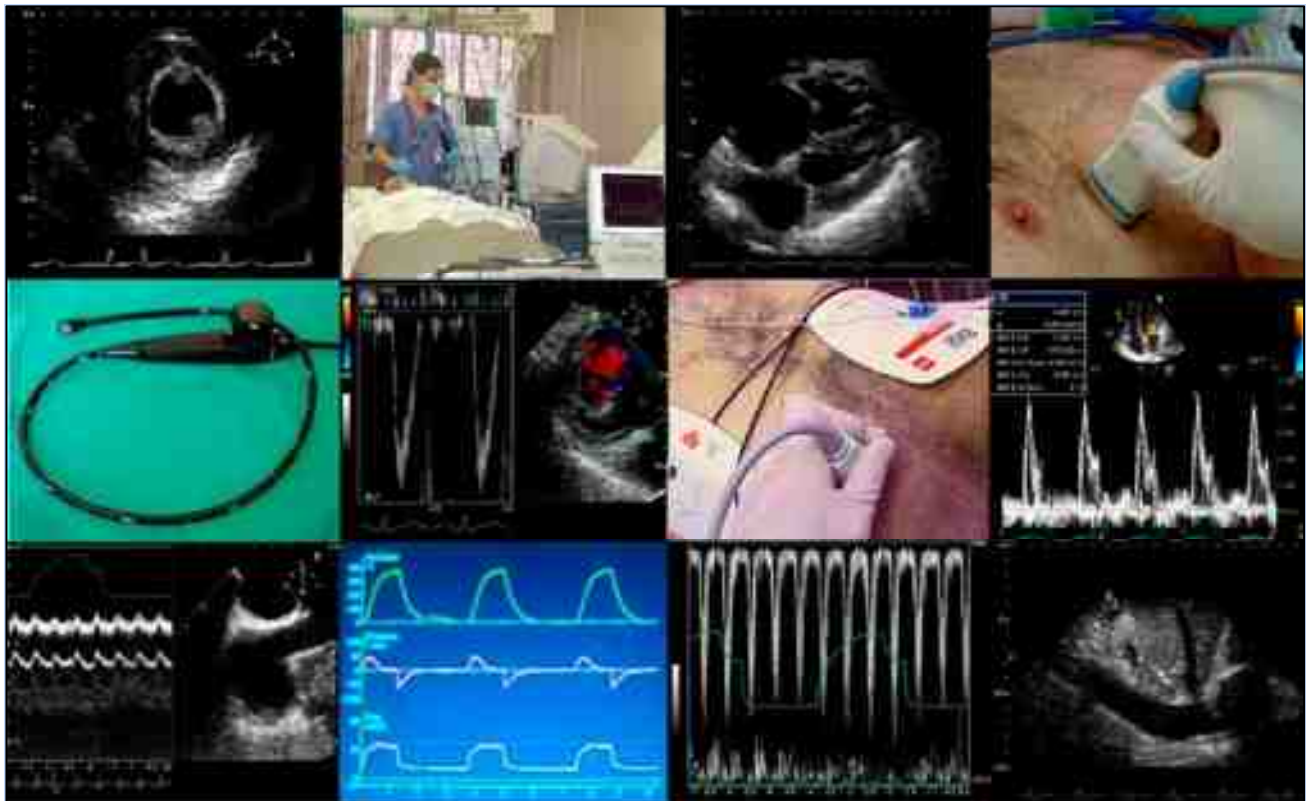
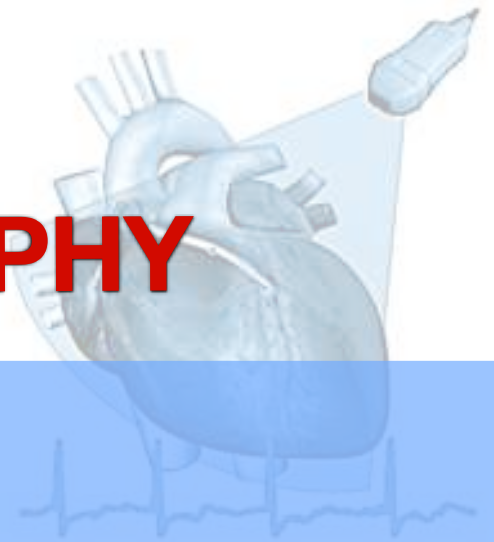


**WINFOCUS'**

# **CRITICAL CARE ECHOCARDIOGRAPHY**



**BASIC ECHO - Focused Echocardiography**

**ADVANCED ECHO - Echodynamics**

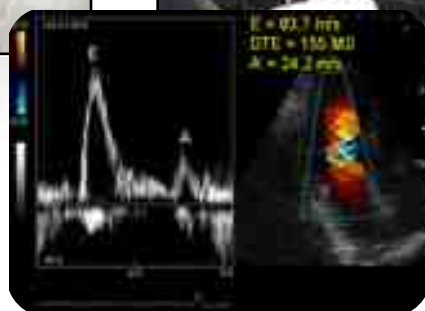
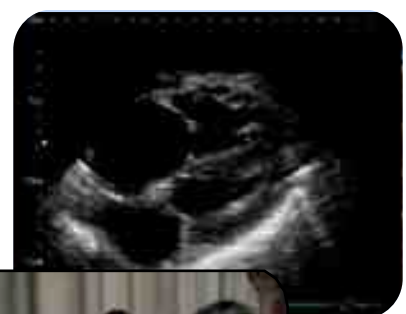
*An International Course for Emergency,  
Intensive and Critical Care physicians  
designed and organized by the  
WINFOCUS ECHO-ICU Group*



**A course on Echocardiography specifically designed for Intensive, Critical Care and Emergency Physicians**, with 2 different training pathways, tailored to the different needs of trainees. The first (“**WF BASIC ECHO - FOCUSED ECHOCARDIOGRAPHY**”) is targeted at physicians who are new to Echocardiography, and covers the use of Transthoracic Echocardiography (**TTE**) in the setting of cardiac arrest/peri-resuscitation, and as a screening tool for the unstable patient in the ICU. This module on basic Echo will include the internationally well-known formats of FEEL (Focused Echocardiography Evaluation in Life support) and FATE (Focused Assessment with Transthoracic Echocardiography), and might also be of interest to more Echo-experienced intensivists or cardiologists wishing to make their focused Echo assessment of the critical patient more effective. The second course (“**WF ADVANCED ECHO - ECHODYNAMICS**”) is targeted at physicians who already practice Echocardiography, and wish to learn **the specialty-specific use in the critical patient of both Transthoracic (TTE) and Transesophageal (TEE) Echocardiography in a “hemodynamic fashion”**: a goal-oriented approach, aimed at providing the clinician with key cardiovascular information to noninvasively manage the hemodynamically unstable patient.

Trainees will be able to register separately for a single course, BASIC or ADVANCED, or for both courses in combination, depending on their training needs.

The faculty gathers some of the world’s major experts in the use of and training in Echocardiography in ICU, and this course represents the second part of an Echo training programme which follows a dedicated **E-learning course**: participants will have free access to a web-based modular training format in the months preceding the course, so as to maximize their learning and minimise time spent in **formal lectures** during the course itself. **Interactive clinical scenarios, Live Sessions from the ICU, the EmEchoSimTest, and HOT Sessions**, (Hands On Training), therefore represent the core of this course.





# WF BASIC ECHO (WBE) Focused Echocardiography

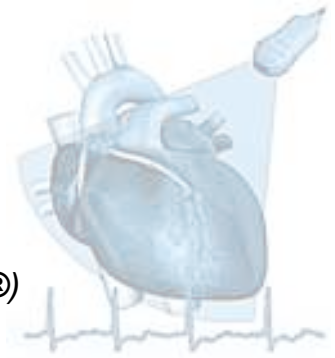


Directors: R. Breitzkreutz, S. Price, G. Via

**online** **e-learning on US physics and principles, “knobology”, pitfalls & artifacts in echocardiography** available at [www.winfocus.org/e-learning/ECHO-MODULAR](http://www.winfocus.org/e-learning/ECHO-MODULAR)

## **May 24<sup>th</sup>** **PERIRESUSCITATION ECHO (FEEL)**

- |       |   |
|-------|---|
| 8.00  | <i>Registration, welcome and course instructions</i>  |
| 8.30  | PRE TEST  |
| 9.00  | <b>Focused Echocardiography in Critical Care: aims and place in echo training</b> (S. Price)  |
| 9.10  | <b>Sonoanatomy of the Heart: basic TTE views &amp; eyeballing principles</b> (G. Via)   |
| 9.35  | <b>Basic Ventricular dysfunction assessment: LV and RV</b> (M. Balik)   |
| 10.00 | <i>Coffee</i>   |
| 10.25 | <b>Basic Tamponade and Echo-guided Pericardiocentesis</b> (M. Haas)   |
| 10.45 | <b>HAND ON TRAINING (HOT 1): Basic TTE views, Normal findings revision, Free hand</b> (12 WORKSTATIONS with healthy models, tutorial laptops) |
| 13.15 | <i>Lunch</i>  |
| 14.15 | <b>Basic volume status assessment</b> (G. Voga)   |
| 14.35 | <b>Focused Echocardiographic Evaluation in Life support (FEEL): The Algorithm</b> (R. Breitzkreutz)   |
| 14.55 | <i>Break</i>  |



**15.05**      **HANDS ON TRAINING (HOT 2): ALS Megacode, Pathological clips, FEEL, FATE protocol**  
(12 WORKSTATIONS with healthy models, tutorial laptops, ResuschiAnne mannequins®, SonoSim®, EmEchoSim Test®)

**17.35**      *End of first day*

**May 25<sup>th</sup>**      **ECHO IN SHOCK ASSESSMENT (FATE)**

**8.00**      **Focused Assessment with Transthoracic Echocardiography (FATE): the Protocol**    (E. Sloth)

**8.20**      **Basic valves assessment**    (E. Catena)

**8.35**      **Overall approach to the shocked patient**    (G. Via)

**8.50**      **Pitfalls and limitations of focused echocardiography**    (S. Price)

**9.10**      *Coffee*

**9.35**      **Implementation and organization of an ICU Echo program**    (D. Talmor)

**9.50**      **“Echo bazaar” (HOT 3): choose a topic and ask the expert!**

**10:50**      **INTERACTIVE CASE SESSION**

**11:50**      **POST TEST**

**12:20**      *End of Course & Certificate distribution*





# WF ADVANCED ECHO (WAE) Echodynamics



Directors: E.Sloth, D. Talmor, G. Via

**online** **e-learning** available at  
[www.winfocus.org/e-learning/ECHO-MODULAR](http://www.winfocus.org/e-learning/ECHO-MODULAR)

## **May 25<sup>th</sup>** **ECHODYNAMICS**

- 13.10 *Registration and Welcome*
- 13.40 PRE TEST
- 14.10 **Introduction: hemodynamic echocardiography** (G. Via)
- 14.20 **Evaluation of left ventricular systolic function** (F. Guarracino)
- 14.40 **Evaluation of right ventricular systolic function** (G. Voga)
- 15.00 **Hypovolemia and volume responsiveness** (B. Cholley)
- 15.20 *Coffee*
- 15.45 **Measurement of cardiac filling pressures** (S. Price)
- 16.05 **Measurement of cardiac output and pulmonary artery pressure** (D. Talmor)
- 16.25 **LIVE SESSION FROM THE ICU**
- 17.55 *End of first day*

## **May 26<sup>th</sup>** **CLINICAL SCENARIOS**

- 8.00 **Evaluation of septic shock** (J. Poelaert)
- 8.20 **Evaluation of chest trauma** (D. Talmor)
- 8.40 **Evaluation of complicated AMI** (L. Lanzarini)
- 9.00 **Evaluation of tamponade** (M. Slama)







9.20 *Coffee*

9.45 **HOT SESSION**

12.45 *Lunch*

13.35 **Pulmonary edema: cardiogenic vs non cardiogenic.**

**Weaning failure from mechanical ventilation** (S. Price)

13.55 **Evaluation of ARDS** (M. Slama)

14.15 **Pulmonary edema: lung ultrasound** (G. Via)

14.35 *Break*

14.50 **Evaluation of acute pulmonary embolism** (E. Catena)

15.10 **Evaluation of severe acute valvular dysfunction** (A. Hussain)

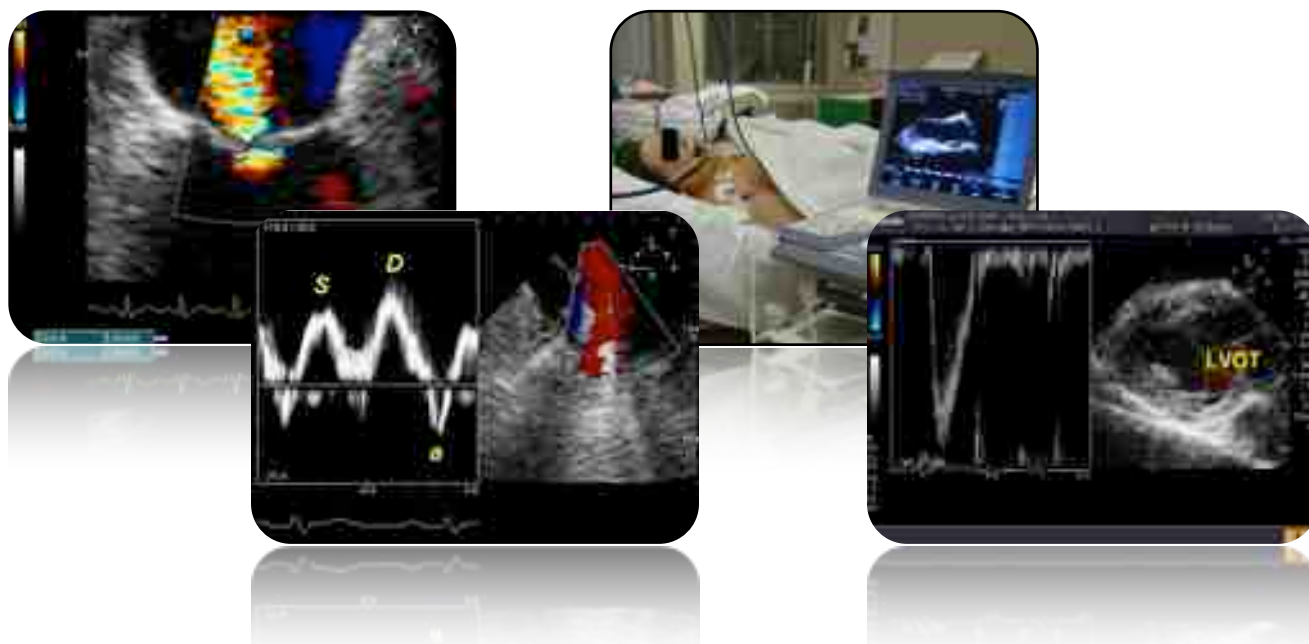
15.30 **LIVE SESSION FROM THE ICU**

16.40 *Coffee*

17.05 **INTERACTIVE CASE COMPETITION**

18.35 **POST TEST**

19.00 *End of Course & Certificate distribution*



## Faculty

**Balik Martin** (Prague, CZECK REPUBLIC)  
**Breitkreutz Raoul** (Homburg, GERMANY)  
**Catena Emanuele** (Milan, ITALY)  
**Cholley Bernard** (Paris, FRANCE)  
**Guarracino Fabio** (Pisa, ITALY)  
**Haas Marco** (Bad Nauheim, GERMANY)  
**Hussain Arif** (Riyadh, SAUDI ARABIA)  
**Lanzarini Luca** (Pavia, ITALY)  
**Poelaert Jan** (Brussels, BELGIUM)  
**Price Susanna** (London, UK)  
**Slama Michel** (Amiens, FRANCE)  
**Sloth Erik** (Aarhus, DENMARK)  
**Talmor Daniel** (Boston, USA)  
**Via Gabriele** (Pavia, ITALY)  
**Voga Gorazd** (Celje, SLOVENIA)

## Course Directors

**Breitkreutz Raoul** (Frankfurt, GERMANY)  
**Price Susanna** (London, UK)  
**Sloth Erik** (Aarhus, Denmark)  
**Talmor Daniel** (Boston, USA)  
**Via Gabriele** (Pavia, ITALY)

## Organizing Committee

**Braschi Antonio** (Pavia, ITALY)  
**Catena Emanuele** (Lecco, ITALY)  
**Neri Luca** (Milan, ITALY)  
**Raimondi Ferdinando** (Milan, ITALY)  
**Segala Marco** (Milan, ITALY)  
**Storti Enrico** (Milan, ITALY)

## Scientific Secretariat

### Via Gabriele

Servizio di Anestesia e Rianimazione I  
Fondazione IRCCS Policlinico S. Matteo – Pavia  
Tel: +39 347 0560623 Mail: [gcvia@libero.it](mailto:gcvia@libero.it)

## Organizing Secretariat

### START PROMOTION

Via M. Macchi, 50 – 20124 Milano  
Tel: +39 02 67071383  
FAX +39 02 67072294  
[www.startpromotion.it](http://www.startpromotion.it)

*A joint project of the World Interactive Network Focused On Critical UltraSound (WINFOCUS) – the FATE Group, Aarhus University Hospital, Skejby, Denmark – the Emergency Ultrasound working group of the University Hospital, Frankfurt, Germany - the Echocardiography Department of the Royal Brompton Hospital, London, UK - Fondazione IRCCS Ca' Granda Ospedale Maggiore Policlinico - the University Hospital Fondazione IRCCS Policlinico San Matteo, Pavia, Italy - the SMART Congress, Milan*



## Venue

Aula Polo Scientifico Fondazione IRCCS Ca' Granda Ospedale Maggiore Policlinico, Via F. Sforza, 35 - 20122 Milan, ITALY

## Registration and Fees

The Course includes a **Pre-Course online** ([www.winfocus.org/e-learning/ECHO-MODULAR](http://www.winfocus.org/e-learning/ECHO-MODULAR)). Only a **maximum number of 60 participants** for each course ( **BASIC** or **ADVANCED** ) will be accepted, in order to obtain a trainee to trainer ratio for the hands-on sessions of no more than 5 to 1. **Italian Continuing Education in Medicine Accreditation (ECM) credits** have been applied for.



Language spoken during the course will be **English**.

**Simultaneous translation in Italian** will be provided.

### Registration Fee:

- **BASIC** ..... 600,00 € (500 € + 20% VAT, IVA)
- **ADVANCED** ..... 600,00 € (500 € + 20% VAT, IVA)
- **BASIC + ADVANCED** ..... 1150,00 € (958 € + 20% VAT, IVA)

Registration Fees include:

- Access to pre-Course online material
- Attendance to scientific sessions (lectures, interactive case studies, live sessions, HOT sessions)
- Italian Continuing Education in Medicine (ECM) Accreditation
- Course Kit
- Snack-Lunches, Coffee Breaks

Registration should be made online at the website [www.startpromotion.it](http://www.startpromotion.it), **before May the 6<sup>th</sup> 2010**. Registration will be confirmed on receipt of payment, places will be allocated on a "first come, first served" basis. In case of cancellation before April the 30<sup>th</sup>, 50% of the registration fee will be refunded. After that date, no reimbursement will be made. **Participants to ADVANCED Course are required to bring a pocket calculator** (for the interactive sessions and MCQs)

Registration fees **can be paid as follows:**

- Non transferable banker's cheque (Assegno Bancario non trasferibile) / Banker's draft (Assegno Circolare)
- Post office money order (Vaglia postale)
- Banker's transfer to: START PROMOTION Srl – INTESA SANPAOLO Spa, Agenzia di Pavia, viale Cesare Battisti, 18 - CIN X, ABI 03069, CAB 11310, C/C 000027269163, BIC Code BCITIT33702, IBAN IT21X030 6911 3100 0002 7269 163.

Further detailed instructions for registration form filling and payment will be at [www.startpromotion.it](http://www.startpromotion.it).

